

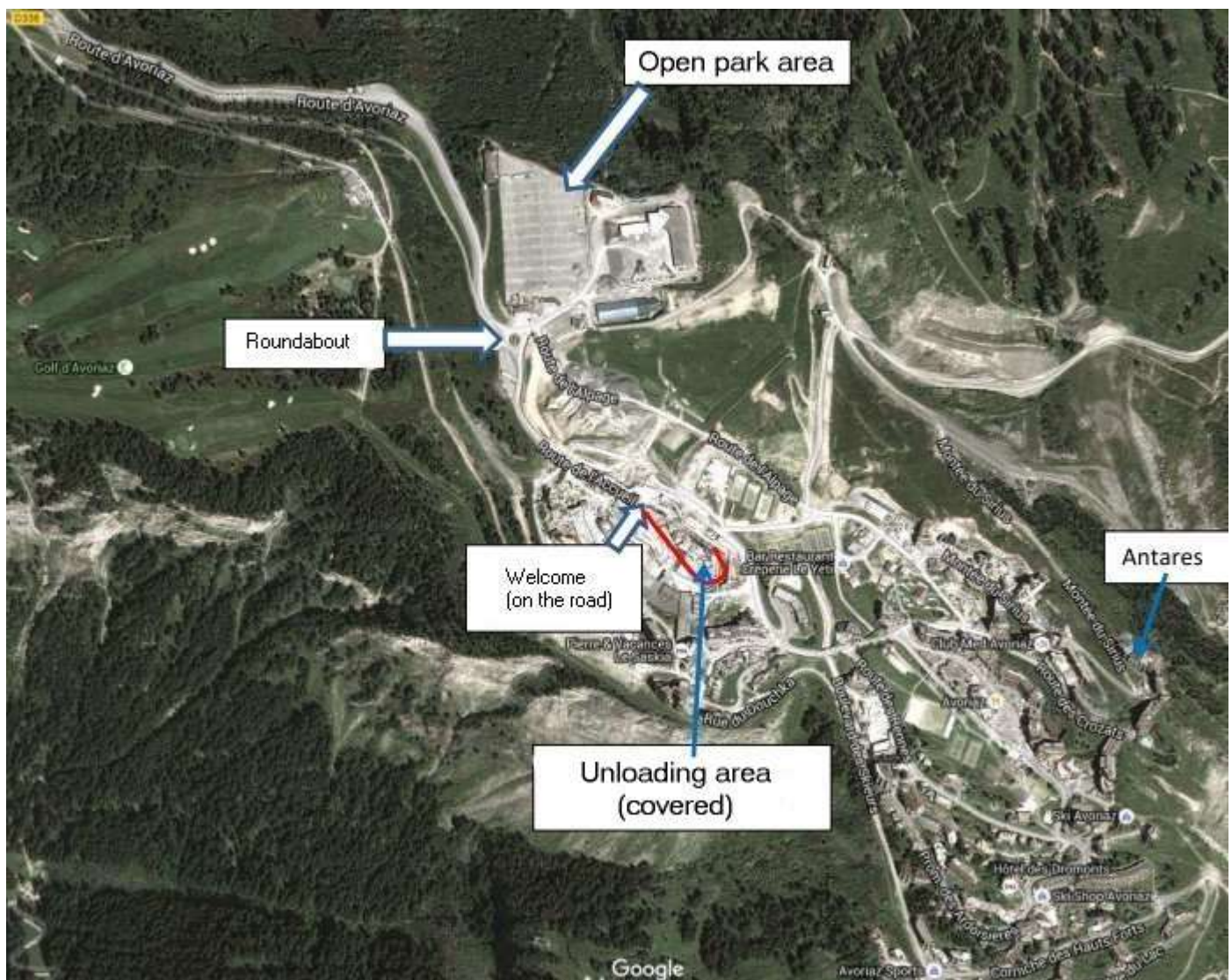
Arrival by car

From Morzine, the road up to Avoriaz is about 12km.

Arrival in Avoriaz

When you first arrive in Avoriaz there is a roundabout. Go straight across. You will be stopped by a person of the station that will indicate the entrance to the unloading space. You still have to make the journey in red below.

Unload all your belongings there. The driver must then take the car to the open car park while his passengers take care of the luggage. The car park is situated close to the roundabout. The driver will need snow shoes to return to join his passengers on foot. The car park should be paid when leaving the resort. Do not lose the ticket ... let it in the car.



When the driver rejoins the passengers at the unloading area, he must approach a resort employee who will indicate where to take the right shuttle to Antares.

Access the Antares building

You must not take the horse-drawn sleigh because the slope to get to Antares is too steep. Everybody knows this but sometimes some sleigh drivers try to insist. Refuse and take a shuttle.



← Shuttles are snowcats pulling a trailer on skis. They will take you to the entrance of the Antares. Cost is about 10 € per family.

Where the shuttle drops you off you just take a lift (which is more a freight elevator) to reach the lobby of the Antares building located one floor up.

Then walk across the lobby to reach the 3 other lifts.



Departure Antares – Going back home

For your return, you must bring all your stuff to the entrance of the Antares residence, where the shuttle first left you.

From there, call +33 4 50 74 01 55 to get a shuttle. Specify how many of you there are. Say you are ready. (Waiting time 10 to 15 minutes)

The shuttle will take you back to the unloading area where you will do in reverse the arrival procedure.